

## MTS Echo® Software as a Service

Monitor your entire lab from anywhere at any time

### Benefits

- » Access test status information remotely
- » Receive alerts about important changes
- » Manage time-critical tests efficiently
- » Monitor lab operations around the globe
- » Reduce test costs by minimizing unscheduled downtime
- » Eliminate unnecessary night and weekend visits to the lab

Maintaining uptime has a direct impact on your lab's productivity. Downtime in the lab means wasted resources and possibly even missed deadlines. MTS can help you maximize uptime by giving you the ability to stay connected to the equipment in your lab—whether you are in the lab, down the hall or far away. MTS Echo Intelligent Lab provides real-time, remote monitoring that can help you improve lab efficiency.

MTS Echo Software provides 24/7 access to test status and equipment health information, so you can respond to issues quickly and avoid costly delays caused by unexpected test interruptions. This cloud-based solution allows you to monitor your lab from any web-enabled device.

It works with MTS TestSuite™ Software to give you access to a broad range of status messages. You can set up alerts to notify you via Android™ or iOS® native smartphone app, e-mail or text message when status changes occur. With this visibility you can quickly and easily answer questions from colleagues or customers about lab operations.

MTS Echo software is designed with power and flexibility in mind. View more than one test station at the same time by combining information from multiple systems on a single screen, or access details about a specific test. You determine what you want to see; and you can set access levels so authorized users can find the information they need as well.

be certain.

## Any test. Anytime. Anywhere.

MTS Echo software is a real-time, remote monitoring software solution for the entire lab that can be accessed anywhere by any web-enabled device: smartphone, laptop or tablet. There is no special hardware for your IT staff to install and you will have visibility into your lab operations that you've never had before. Use this power to reduce downtime, improve test and staff scheduling, and generally improve the efficiency of your lab. You can connect MTS Echo software to as many pieces of lab equipment as you choose. There is also no limit to the number of users who can be granted access, so you can easily share information with authorized users.

### Equipment Monitoring

With MTS Echo Equipment Monitoring, you'll be able to view individual station status information, including the values of load, stroke, displacement, rotation, cycle counts and more. Trigger MTS Echo alerts from MTS TestSuite events. You'll also be able to see hydraulic power unit on/off status, hydraulic service manifold on/off and low/high status, and review log files.

With this improved visibility, you are no longer tied to the lab to know the status of tests. You can access this information from any desktop, laptop or mobile device, including tablets and smartphones. This immediate access to information from any location makes it far simpler to monitor lab operations and make better decisions about your test program.

### Health Monitoring

MTS Echo Health Monitoring allows you to maintain your hydraulic systems in the most efficient manner. Condition-based monitoring allows for early detection of potential issues and prevents downtime for unneeded maintenance. This convenient secure connection to hydraulic system condition will help you make the best decisions regarding HPU operation.

#### EQUIPMENT MONITORING INFORMATION:

- » Run state
- » Interlock state
- » Signal values
  - Load (force)
  - Stroke
  - Displacement
  - Rotation
  - Cycle counts
  - Min/max
  - More
- » HPU/HSM states
- » Station logs



### Native Smartphone App

The native smartphone app for Android and iOS provides ready access to current test status information in an easy-to-read graphical format. It also shows a list of all previous status feed messages delivered to give you historical perspective.



Native smartphone app on Android and iOS

### Mobile Alerts

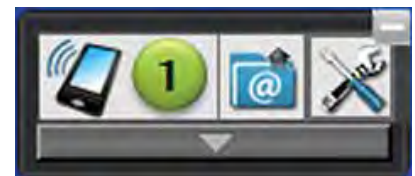
Set up alerts to push system status updates to any number of users. You can choose which alerts each user receives and whether they receive them via the smartphone app, e-mail or SMS text message.



Mobile phone messages

### MTS Echo Widget

The widget is installed on the Controller PC. It connects to the controller to monitor system status and makes this information available to authorized users. The MTS Echo Widget requires only an outbound HTTPS connection and can be configured to work with proxy servers.



## Lab Views

### LAB LAYOUT VIEW

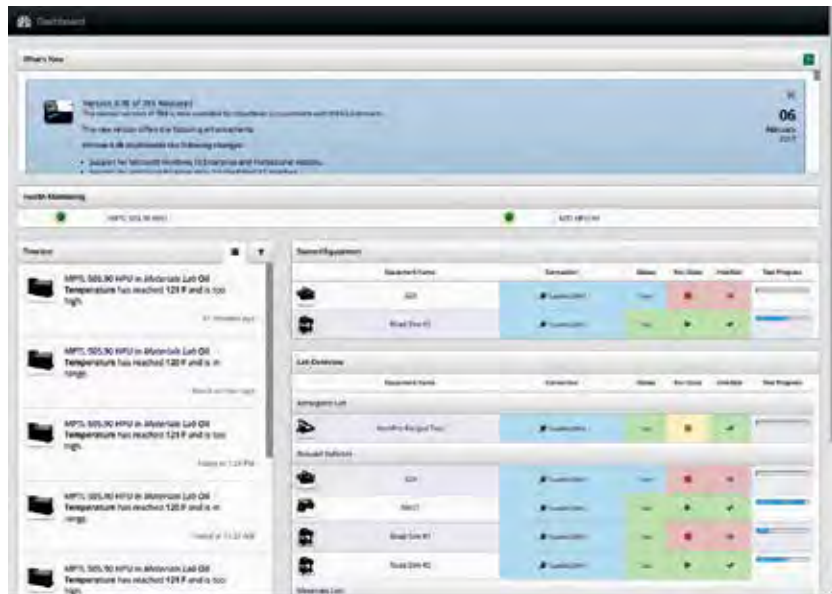
The Lab View provides a visual representation of the entire lab. Create a virtual representation of your lab by selecting equipment images and dragging them to the appropriate place on the screen. Now you can see the status of all the test systems at once. You'll be able to set up user accounts with specific access levels, and create user-configurable views to help lab personnel see the data they need to do their job. An operator can look at their test stations, the lab manager can look at the entire lab and the general manager can look at various lab locations to see the operational status of the tests. From this view, you can click on an individual system to see details on the status for that particular test system.



Lab Layout View

### LAB DASHBOARD

The Lab Dashboard provides a summary of everything happening in your lab on one screen. Monitor real-time equipment status as well as review recent changes through the timeline. Use the dashboard to quickly access details about a specific system or test.



Lab Dashboard

### MTS Echo Compatibility Extends to:

All test systems running on one of the following controllers with MTS Series 793 software version 5.3 or later:

- » FlexTest® 40/60/100/200
- » FlexTest SE (with automation)
- » FlexTest GT
- » FlexTest IIm

MTS Criterion® Systems when run with MTS TestSuite 3.6 or later

MTS SilentFlo™ G2 or 515 Hydraulic Power Units (HPUs)

MTS SilentFlo G1 HPUs with upgraded HMI controls



### Easy to Install and Highly Secure

MTS Echo software is extremely easy to set up and configure. It just requires an internet connection and a supported version of MTS Series 793 software. You can set up permissions to limit access to specific individuals, and the transmission of information is very secure. It includes

multiple levels of security: 256-bit SSL encryption, HTTPS, proxy server compatibility and customer configurable security levels. The system is hosted by a 3rd Party Tier 3+ high security facility with virtual servers for guaranteed uptime and redundancy. No inbound connection

is used and no holes need to be opened in your firewall. System status is sent outboard to a secure server where it is relayed only to authorized users. And no test data is communicated, so your sensitive data remains totally secure within your test environment.



**MTS Systems**  
14000 Technology Drive  
Eden Prairie, MN 55344-2290 USA  
Telephone: 1-952-937-4000  
Toll Free: 1-800-328-2255  
E-mail: [info@mts.com](mailto:info@mts.com)  
[www.mts.com](http://www.mts.com)  
ISO 9001 Certified QMS

MTS Echo Intelligent Lab can also be delivered through a local network solution with the MTS Echo Hub. Contact your Service Sales Engineer for more information.

MTS, Echo, FlexTest and MTS Criterion are registered trademarks and MTS TestSuite and SilentFlo are trademarks of MTS Systems in the United States. These trademarks may be protected in other countries. RTM No. 211177.

Android is a trademark of Google Inc.

iOS is a registered trademark of Cisco Systems, Inc.

©2021 MTS Systems  
100-257-231c EchoSoftware • Printed in U.S.A. • 09/21